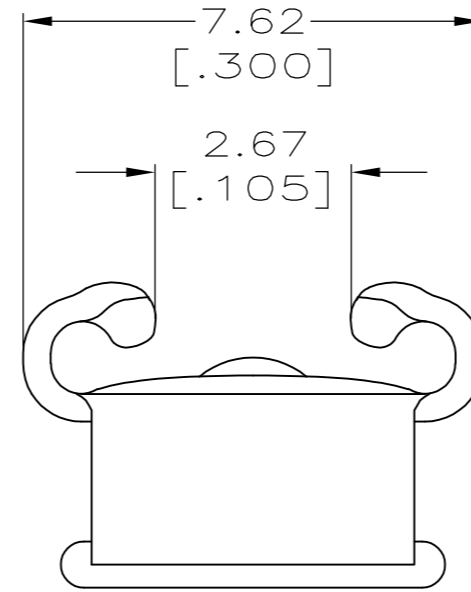
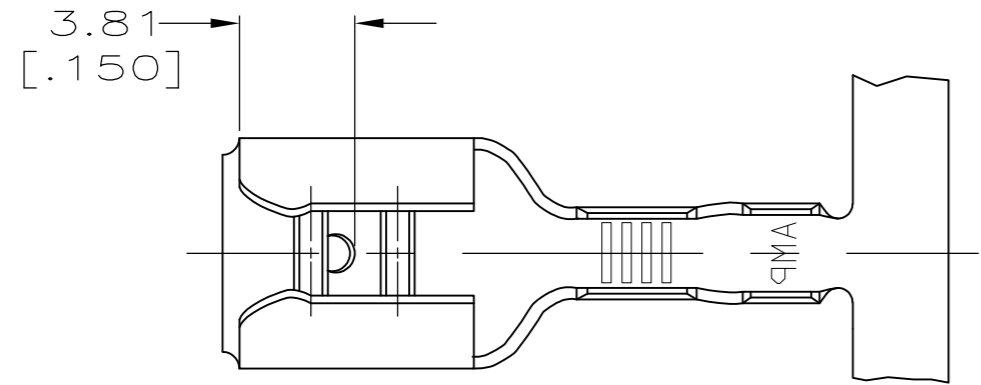


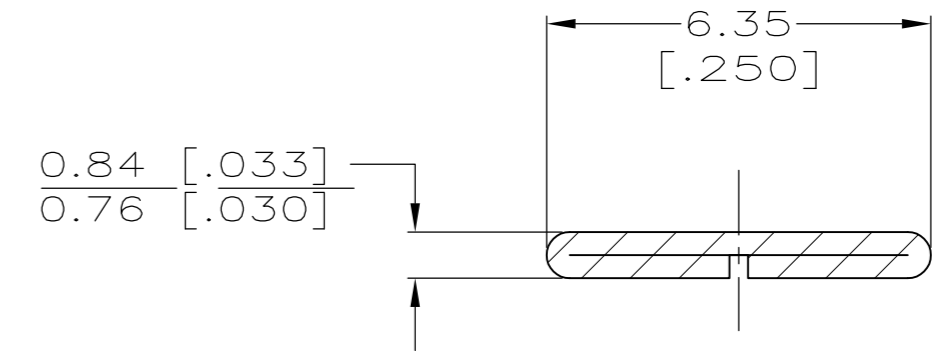
THIS DRAWING IS UNPUBLISHED. RELEASED FOR PUBLICATION  
 © COPYRIGHT - By - ALL RIGHTS RESERVED.

LOC	DIST	REVISIONS			
P	LTR	DESCRIPTION	DATE	DWN	APVD
AF	50	H	REVISED PER ECR-12-013459	27NOV2012	KH PD

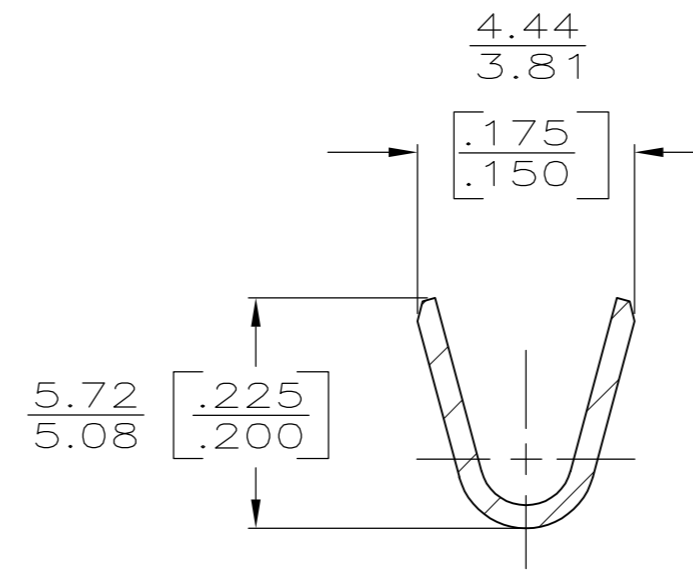
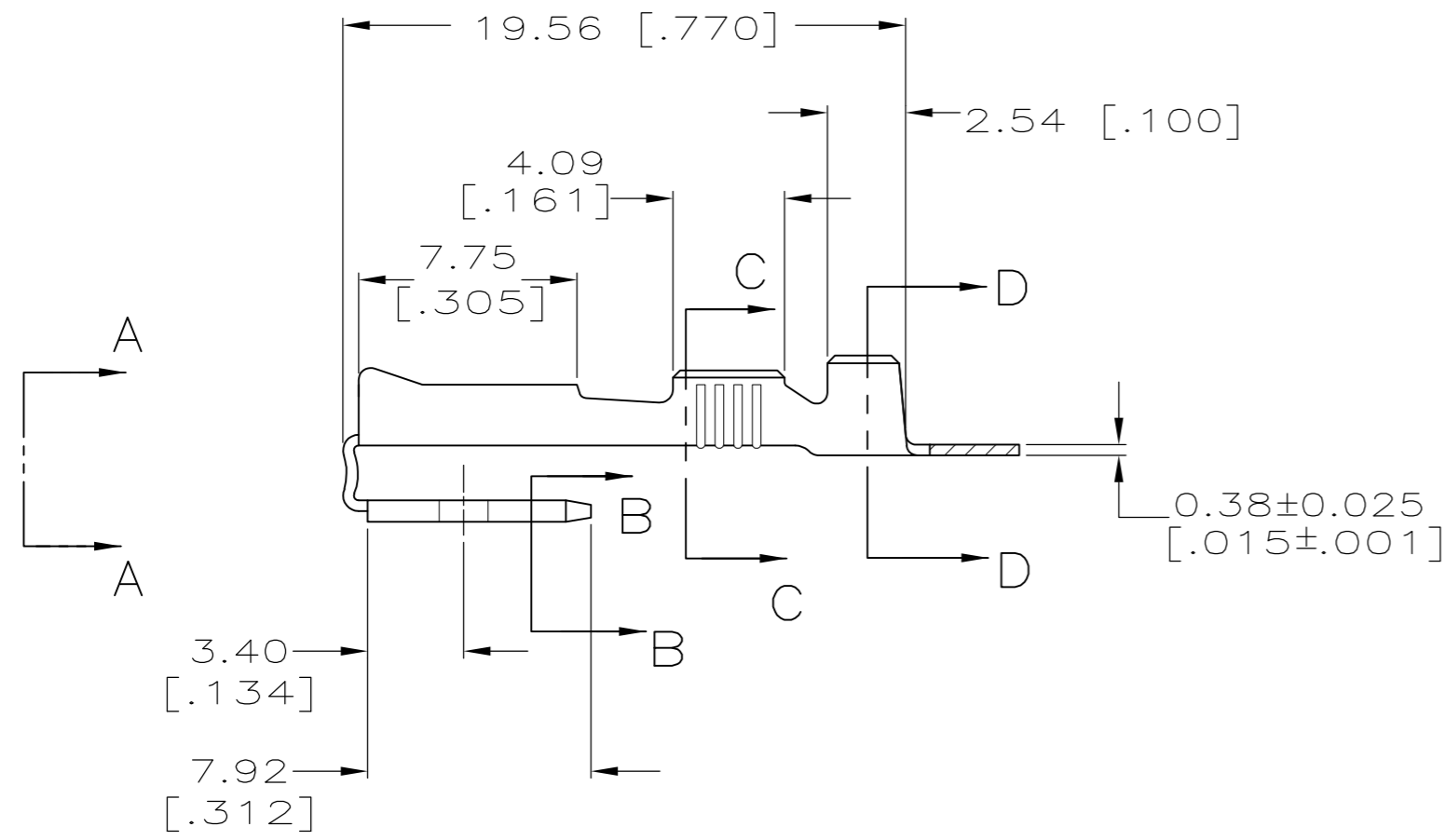
- CONTINUOUS STRIP ON REELS
- MATING TAB THK TO BE  $0.81 \pm 0.025$  [.032±.001]
- WIRE SIZE IS #14-#10 AWG.
- INSULATION RANGE IS 3.81-5.08 [.150-.200] DIA.



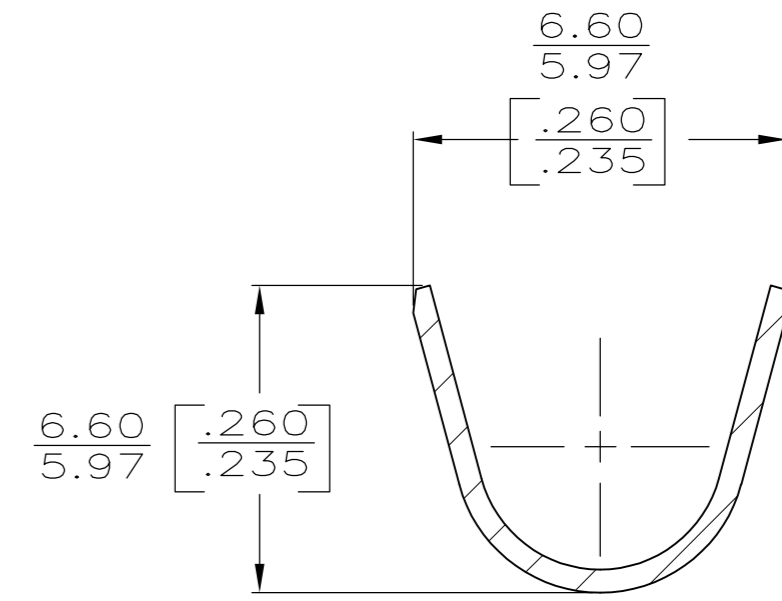
VIEW A-A  
SCALE 8:1



SECTION B-B  
SCALE 8:1



SECTION C-C  
SCALE 8:1



SECTION D-D  
SCALE 8:1

TIN	BRASS	62253-2
-	BRASS	62253-1
FINISH	MATERIAL	PART NO

THIS DRAWING IS A CONTROLLED DOCUMENT.		DWN	JR RUTH	7/12/89		TE Connectivity			
DIMENSIONS: mm [INCHES]		CHK	MS FEHER	7/12/89		RECEPTACLE, FASTON™ PIGGYBACK, 6.35 [.250] SERIES			
TOLERANCES UNLESS OTHERWISE SPECIFIED:		APVD	C MEYERS	7/12/89		SIZE	CAGE CODE	DRAWING NO	RESTRICTED TO
0 PLC ± -		PRODUCT SPEC	114-2082	A2		00779	C=62253	-	
1 PLC ± -		APPLICATION SPEC	WEIGHT	-	SCALE	4:1	SHEET	1 OF 1	
2 PLC ± -		MATERIAL	FINISH	SEE TABLE	CUSTOMER DRAWING		REV	H	
3 PLC ± 0.38 [.015]									
4 PLC ± -									
ANGLES ± -									